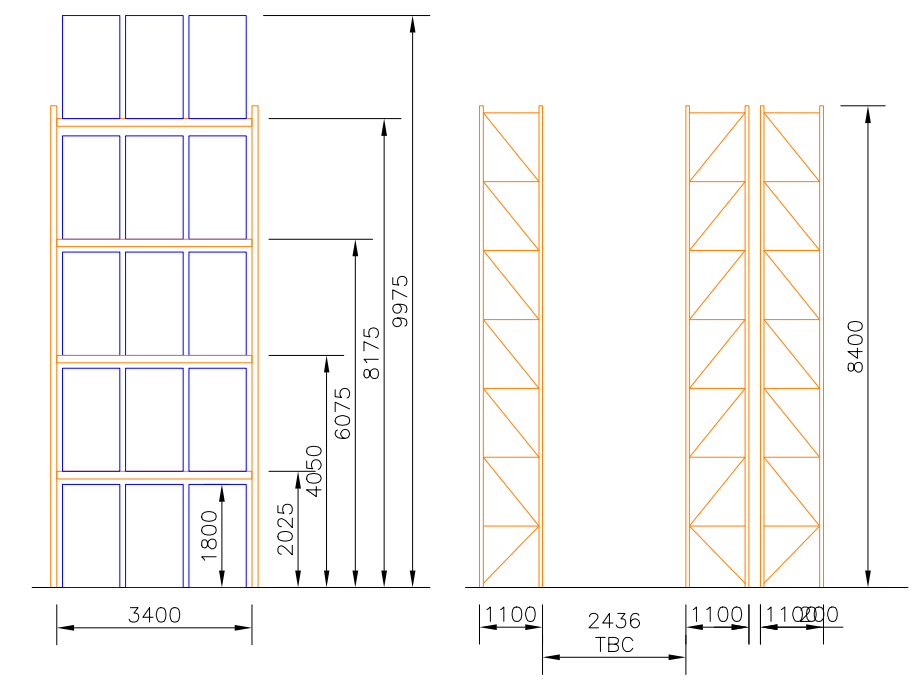
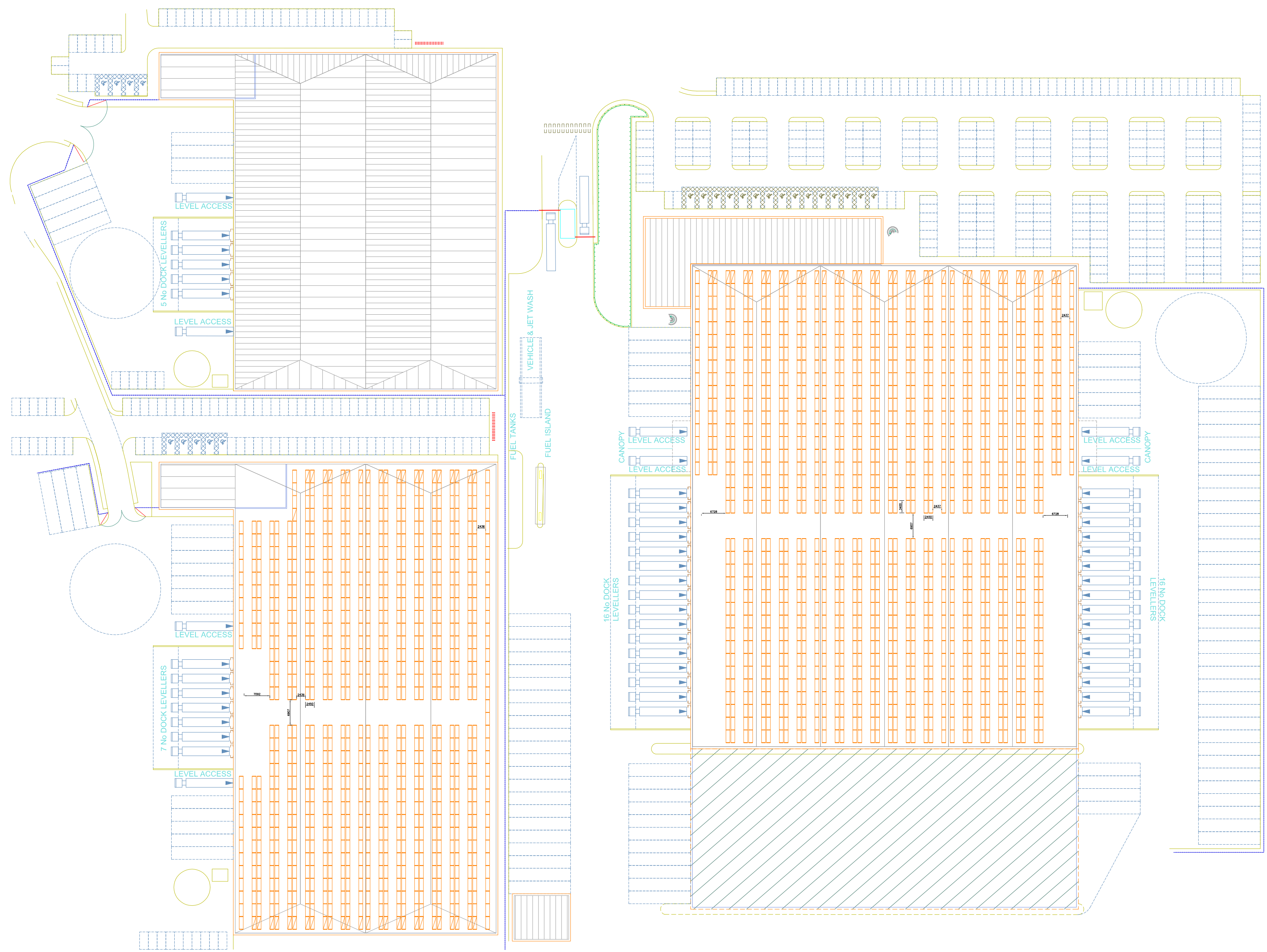


NOTES DO NOT SCALE - WORK TO DIMENSIONS - IF IN DOUBT ASK

THE MAXIMUM IMPOSED POINT LOAD FROM RACKING UPRIGHTS WILL BE 00000 Kgs THROUGH A BASE PLATE AREA OF 00000 mm²
 REDIRACK ADVISE INDEPENDENT VERIFICATION OF THE CAPABILITY OF THE SUPPORTING STRUCTURE TO SUSTAIN SUCH LOADING.

THE INFORMATION ON THIS DRAWING IS THE PROPERTY OF REDIRACK LIMITED. IT MUST NOT BE COPIED WITHOUT WRITTEN CONSENT AND MUST BE RETURNED ON REQUEST.



ARTICULATED (FLEXI) TYPE FLT OPERATION
 PALLETS 1000mm ENTRY X 1200mm DEEP
 X 1800mmHIGH X 1000KGS
 BASED ON 5 PALLETS HIGH
 UNIT 1 PALLET CAPACITY = 19599
 UNIT 3 PALLET CAPACITY = 13230

REVISION	DATE	REDIRACK LIMITED BARNBY ROAD KILNURST ROTHESHAM SOUTH YORKSHIRE S64 3SU TEL-01709 584711 FAX-01709 589821
		TITLE PROPOSED RACKING LAYOUT WINGATE SITE FOR: CANMOOR DEVELOPEMENTS
		DATE 18.06.11
DRAWN BY DJP	SCALE DO NOT	REVISION 3B
PRELIM DWG 3B		