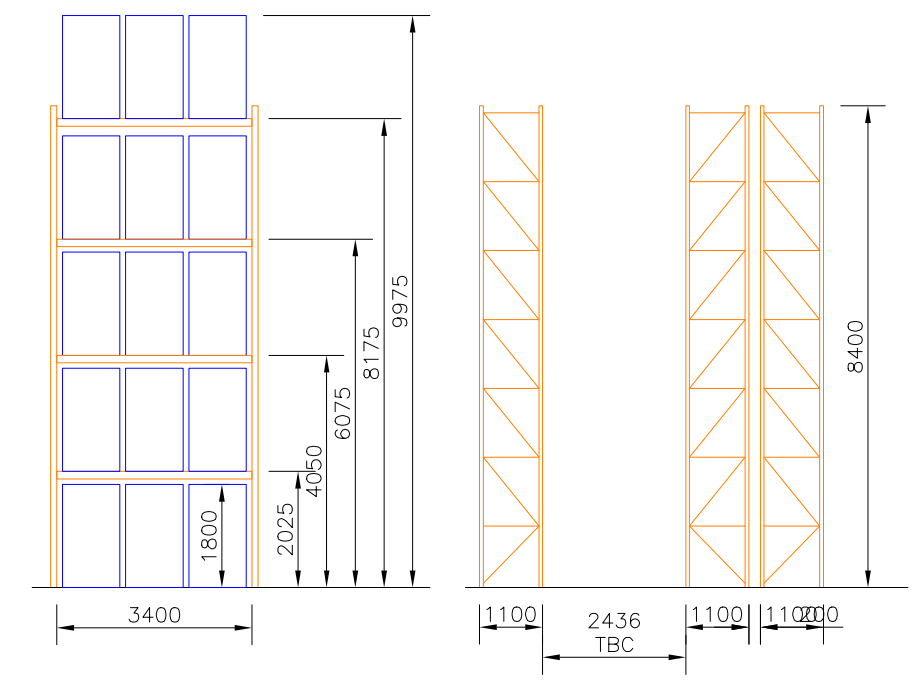
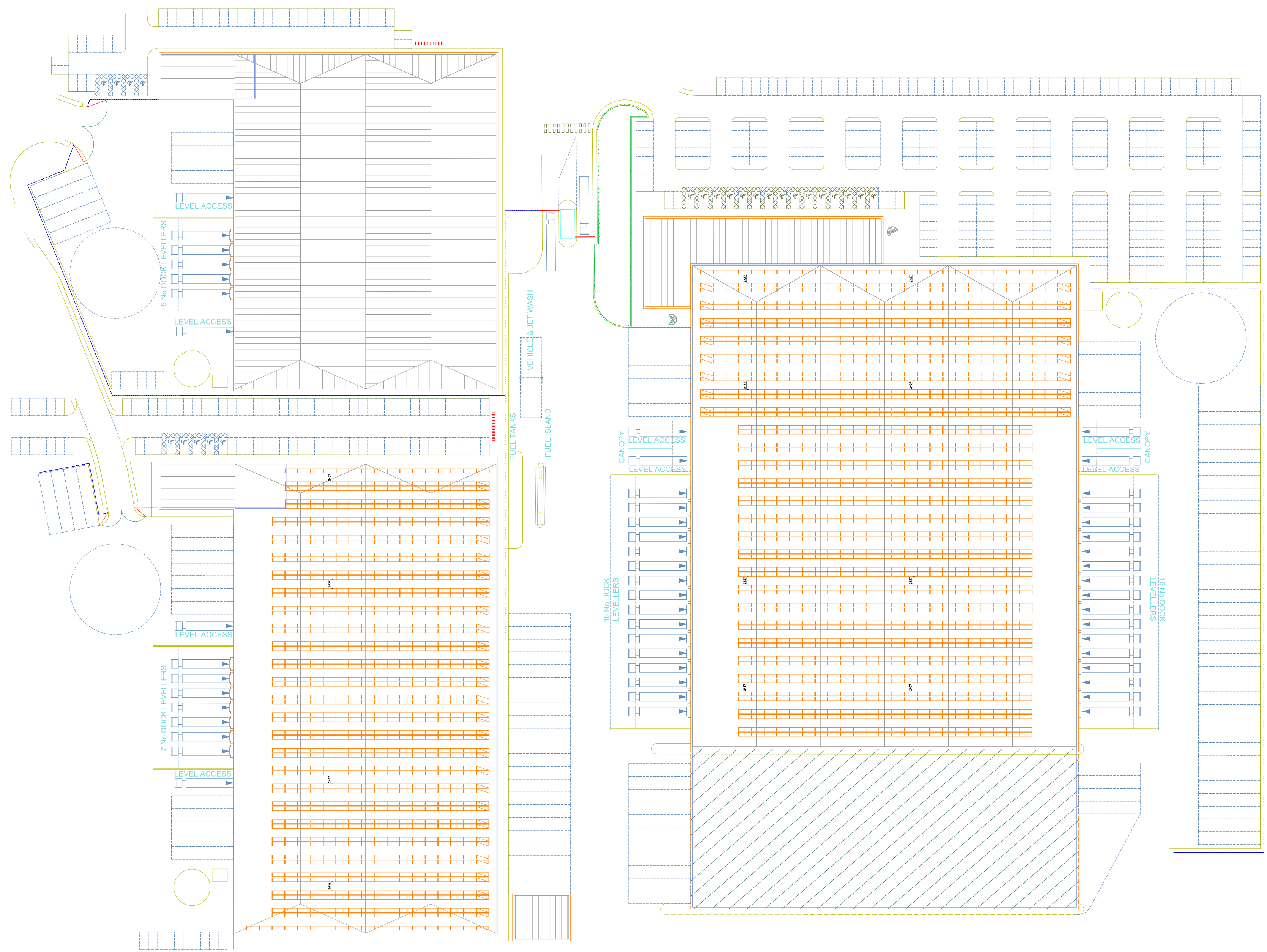


**NOTES** DO NOT SCALE - WORK TO DIMENSIONS - IF IN DOUBT ASK

THE MAXIMUM IMPOSED POINT LOAD FROM RACKING UPRIGHTS WILL BE 00000 Kgs THROUGH A BASE PLATE AREA OF 00000 mm<sup>2</sup>  
 REDIRACK ADVISE INDEPENDENT VERIFICATION OF THE CAPABILITY OF THE SUPPORTING STRUCTURE TO SUSTAIN SUCH LOADING.

THE INFORMATION ON THIS DRAWING IS THE PROPERTY OF REDIRACK LIMITED. IT MUST NOT BE COPIED WITHOUT WRITTEN CONSENT AND MUST BE RETURNED ON REQUEST.



ARTICULATED (FLEXI) TYPE FLT OPERATION  
 PALLETS 1000mm ENTRY X 1200mm DEEP  
 X 1800mmHIGH X 1000KGS  
 BASED ON 5 PALLETS HIGH  
 UNIT 1 PALLET CAPACITY = 17553  
 UNIT 3 PALLET CAPACITY = 12915

PALLET COUNT SUBJECT TO CONSEQUENTIAL  
 LOSSES DUE TO BUILDING COLUMNS

REVISION	DATE	REDIRACK LIMITED BARNBY ROAD KILNURST ROTHESHAM SOUTH YORKSHIRE S64 3SU TEL-01709 584711 FAX-01709 589821
		TITLE <b>PROPOSED RACKING LAYOUT WINGATE SITE FOR: CANMOOR DEVELOPEMENTS</b>
	SCALE DO NOT	DATE 18.06.11
DRAWN BY DJF	SCALE DO NOT	DATE 18.06.11
DRAWING NUMBER	REVISION	
<b>PRELIM DWG 4B</b>		